

SBTN Partner and CEP Update session

January 26, 2022



SCIENCE BASED TARGETS NETWORK
GLOBAL COMMONS ALLIANCE

Today's session

- **Target:** SBTN Partners and CEP members will have a shared understanding of SBTN's work to date and be mobilized toward near-term opportunities and priorities for their involvement.
- **Objectives:**
 - Reconnect on the big picture: SBTN momentum and progress to date
 - Provide updates on key workstreams and offers/requests for involvement
 - Equip you with what you need right now to play your role with SBTN

***Please rename yourself in the following format:**

Name - Org



What can a company or city do to ensure it's doing its part for an equitable, net zero, nature positive future?

Global Momentum



- ★ **FIRST Nature Day**
- ★ **FIRST Nature Zone**
- ★ **FIRST Nature Newsroom**
- ★ **Nature 10% of global media coverage**



Taskforce on Nature-related
Financial Disclosures

nature

[Protect, manage and then restore lands for climate mitigation](#) | Nature.com

IN THE NEWS:

[3 steps to start protecting biodiversity and your business](#) | GreenBiz

[Halt destruction of nature or risk 'dead planet' leading businesses warn](#) | The Guardian

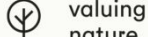
[Why protecting the planet is essential to preventing future pandemics](#) | CNN

[Why the palm oil industry needs targets for nature](#) | Eco-Business

[World leaders gear up to tackle biodiversity loss. Fashion should pay attention](#) | Vogue Business



Corporate Engagement Program members



SBTN structure

Governance function:

Strategy & decision making

Network Council

Composition:

Representatives from SBTN NGO partner organizations and fiscal sponsor (N=8)

Core team functions:

Operations; end user engagement; partner engagement; technical development

Network Hub

Composition:

Employees, contractors and secondees (N=10)

Issue hub functions:

Subject matter expert engagement; technical development

Freshwater

Land

Ocean

Bio-diversity

Composition:

Representatives from SBTN partner organizations (N=varies by hub)



Network Hub

Executive Director: Erin Billman

Assistant: Christine Southam

Operations Lead: Erin O'Grady

Technical Development

Technical Director: TBC*

Technical Coordinator: Samantha McCraine

Science Translation Lead: Oscar Sabag

Accounting Lead: Juliette Pugliesi

Engagement

Corporate Engagement
Lead: Jess McGlyn

Program Associate:
Sarah Bausmith

Financial
Sector
Lead:
Elizabeth
Aceituno

Cities
Engagement
Lead: N/A

Marketing &
Comms
Lead:
Arabella
Stickels

Technical Communications: Emma Marsden

*Search actively underway

Workstreams you'll hear from today

1. Technical Development

- Cross-cutting work on nature
- Issue hub specific work (freshwater, land, ocean and biodiversity)

2. Engagement

- Corporate
- Finance sector

3. Marketing and communications

Technical development

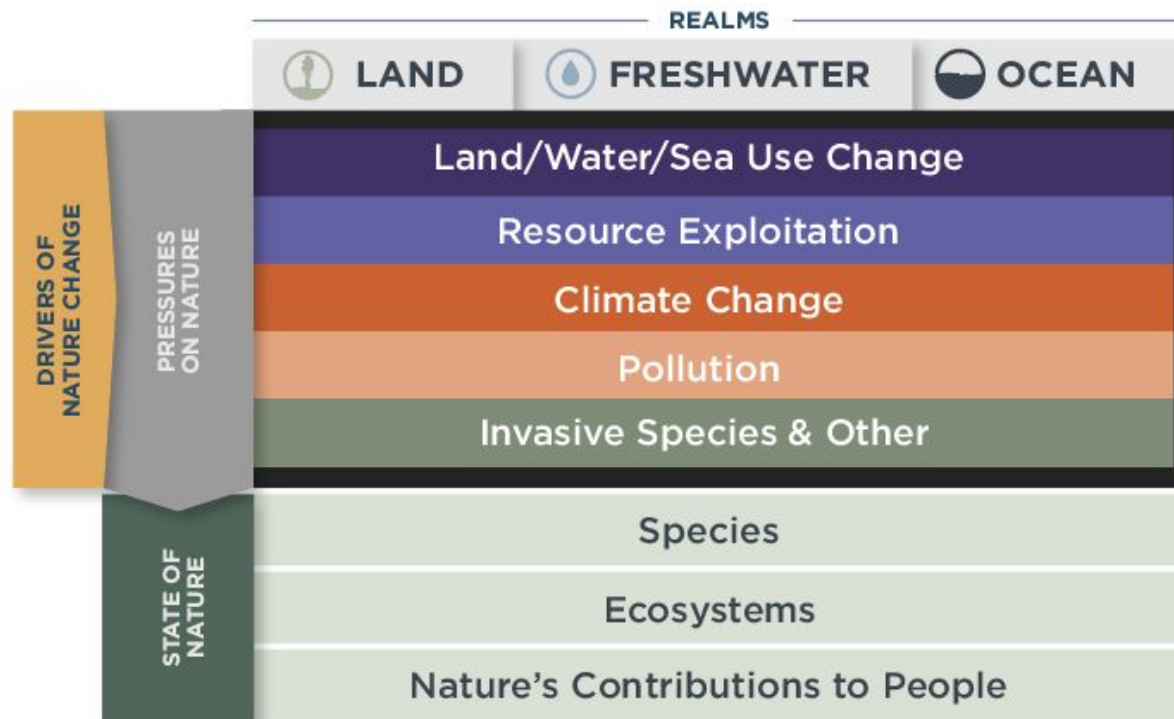
1. Refresh on key concepts
2. Recap ground covered to date
3. What we're focusing on next & how you can help



How to Set SBTs for Nature?



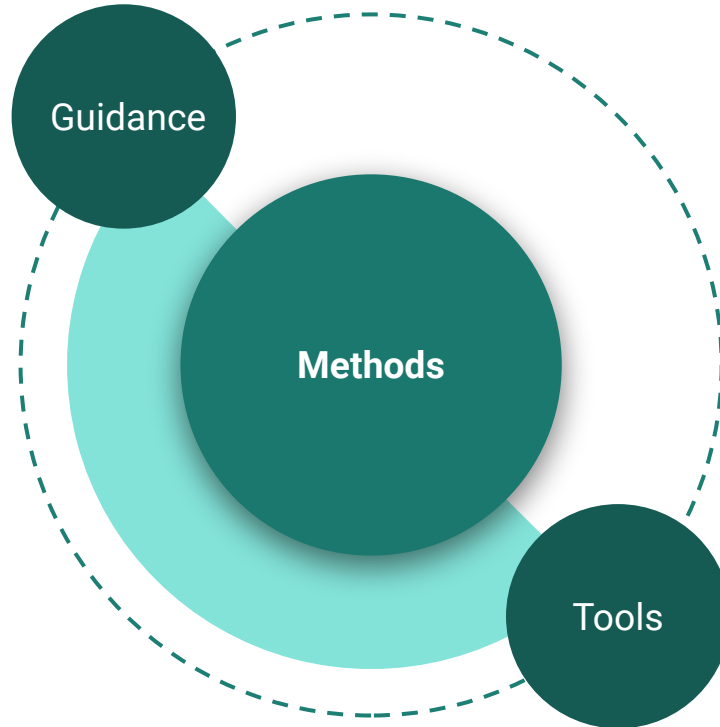
What issues do SBTs address?



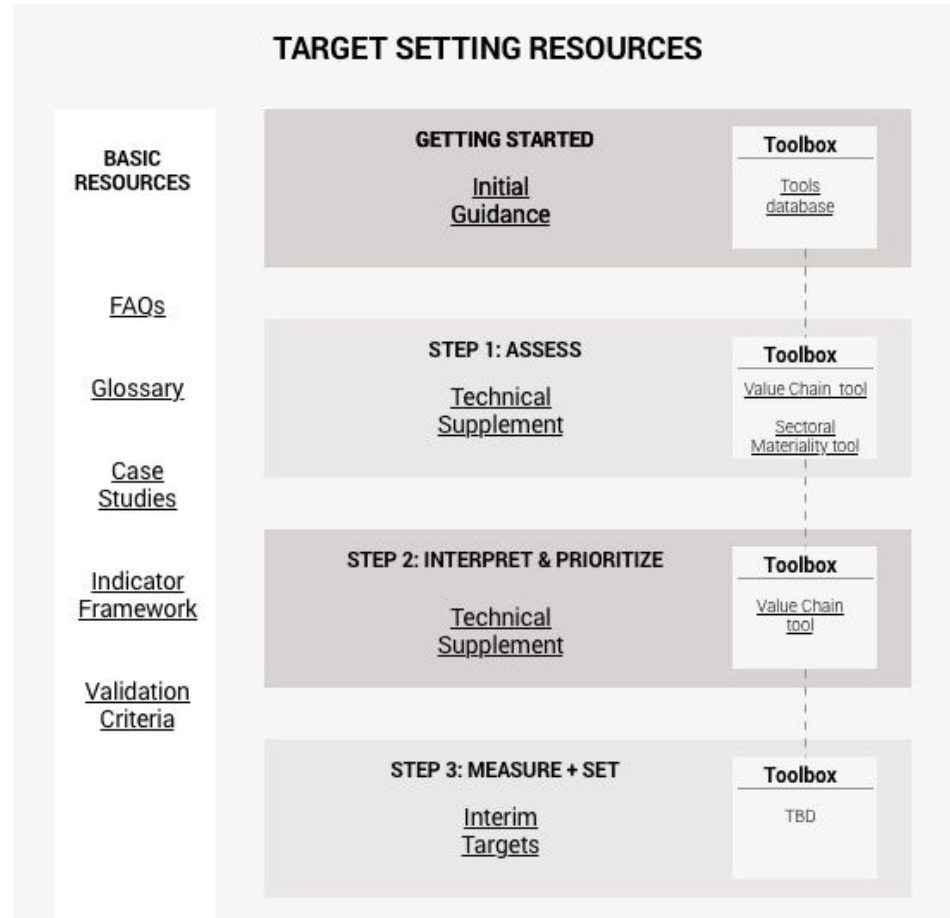
Note: this framework is based on the IPBES 2019 Global Assessment.



What are we developing to help enable companies to set SBTs?



The user experience: guidance, methods, and tools



Complement to the Initial Guidance: Technical Supplements to Steps 1 & 2

Why we've produced these documents

- Meeting needs of companies and partners using the guidance to prepare for setting SBTs
- Adding further detail to ensure compatibility with target-setting methods under development (in particular: freshwater)

Key questions tackled

- *Scope of assessment, tools* to use in pressure/impact assessment, *indicators* to use in pressure/impact assessment and prioritization

Current status

- Under review by experts from our partners and CEP members

Complement to the Initial Guidance: Tools for Steps 1 & 2

Overview of the tools

- Tools database (Steps 1-5)
- Sectoral Materiality Tool (Step 1a)
- Value Chain Review Tool (Step 1b & Step 2)

The screenshot shows a detailed data table with columns for various categories and rows for specific tool descriptions. The table is organized into sections like 'SSTN Tool Database', 'SSTN Scope Coverage', and 'SSTN Impact Metrics'. It includes a 'Summary of progress for selected SSTN classes' table at the bottom left.

Why we've produced these

- Meeting needs of companies and partners trialling the guidance + inputs to tech. dev.

Current status

- Under development (all)

SSTN Tool Database												
Tool Name	Tool Type	Tool Status	To Address Sectoral Materiality Assessment	To Address Scope Coverage	To Address Impact Metrics	To Address Data Availability	To Address User Experience	Description of Tool Type	Tool Type	Input Data Format	Tool Use Input Data by Default?	Description of Tool Input
4	Selfies		<input type="checkbox"/>	<input type="checkbox"/>	<input type="checkbox"/>	<input type="checkbox"/>	<input type="checkbox"/>					- Self profiles in a mass based online view
10	QIP		<input type="checkbox"/>	<input type="checkbox"/>	<input type="checkbox"/>	<input type="checkbox"/>	<input type="checkbox"/>	Questionnaire	Based on the company data collected, users will be able to upload their own data to the tool. The tool will then generate a report based on the data collected.	Text	No	- COP access for forests and water security
11	IMPACT		<input type="checkbox"/>	<input type="checkbox"/>	<input type="checkbox"/>	<input type="checkbox"/>	<input type="checkbox"/>	Content of info based on linear components of impact	Spreadsheet	Spreadsheet	No	MGA across all impact drivers, area of biodiversity, soil, water, air, and climate, and other relevant impact drivers. Quantitative approach, qualitative and targeted metrics. Quantitative approach (components based) approach of biodiversity metrics (management approach and targeted metrics approach). The tool will be subject to targeted feedback. It includes the ability to select amount of community purchased to give an estimate of impact on one or more natural capital than to compare with an global average.
16	Redfooty Impact Metrics (RIM)		<input type="checkbox"/>	<input type="checkbox"/>	<input type="checkbox"/>	<input type="checkbox"/>	<input type="checkbox"/>	See tool for full details. RIM is a Redfooty Impact Metrics (RIM) tool that measures the impact of a company's operations on the environment. It is designed to be used by companies to assess their own impact and to compare it with other companies in the same sector.	Consumption and output	Spreadsheet	No	- The Redfooty Impact Metrics (RIM) is calculated using a small number of data points (e.g. energy, water, and materials) and is compared with an global average. Biodiversity Impact Metrics - level one, a proportion of biodiversity metrics (management approach and targeted metrics approach). Biodiversity Impact Metrics - level two, a proportion of biodiversity metrics (management approach and targeted metrics approach). Biodiversity Impact Metrics - level three, a proportion of biodiversity metrics (management approach and targeted metrics approach). The tool will be subject to targeted feedback. It includes the ability to select amount of community purchased to give an estimate of impact on one or more natural capital than to compare with an global average.
17	The Redfooty Impact Metrics (RIM)		<input type="checkbox"/>	<input type="checkbox"/>	<input type="checkbox"/>	<input type="checkbox"/>	<input type="checkbox"/>	Value chain design, production volume, value chain location	Spreadsheet	Online forms	No	- The Redfooty Impact Metrics (RIM) is calculated using a small number of data points (e.g. energy, water, and materials) and is compared with an global average. Biodiversity Impact Metrics - level one, a proportion of biodiversity metrics (management approach and targeted metrics approach). Biodiversity Impact Metrics - level two, a proportion of biodiversity metrics (management approach and targeted metrics approach). Biodiversity Impact Metrics - level three, a proportion of biodiversity metrics (management approach and targeted metrics approach). The tool will be subject to targeted feedback. It includes the ability to select amount of community purchased to give an estimate of impact on one or more natural capital than to compare with an global average.
18	Good Practice Database for Mining and Biodiversity		<input type="checkbox"/>	<input type="checkbox"/>	<input type="checkbox"/>	<input type="checkbox"/>	<input type="checkbox"/>	Qualitative information on company's value chain	Consumption and output	Flexible	No	- The Good Practice Database for Mining and Biodiversity (GPD) is a database of best practice examples of biodiversity management in the mining sector. It is designed to be used by companies to assess their own impact and to compare it with other companies in the same sector. Biodiversity Impact Metrics - level one, a proportion of biodiversity metrics (management approach and targeted metrics approach). Biodiversity Impact Metrics - level two, a proportion of biodiversity metrics (management approach and targeted metrics approach). Biodiversity Impact Metrics - level three, a proportion of biodiversity metrics (management approach and targeted metrics approach). The tool will be subject to targeted feedback. It includes the ability to select amount of community purchased to give an estimate of impact on one or more natural capital than to compare with an global average.
19	LEAP Impact Index		<input type="checkbox"/>	<input type="checkbox"/>	<input type="checkbox"/>	<input type="checkbox"/>	<input type="checkbox"/>	Energy/water consumption, waste generation, GHG emissions, area occupied by activities, the resources used	Consumption and output	Text files	Yes	- Biodiversity Minimum Performance score - Rating of the most important initiatives with the greatest

Technical development: upcoming priorities

- 1** Ensure Step 1 & 2 technical supplements and supporting tools are ready to use alongside initial SBTN methods for freshwater, when these are publicly released (May 2022)
- 2** Advance additional methods under development (for land and biodiversity)
- 3** Kickstart development of other methods to cover additional issue areas (such as freshwater biodiversity, oceans)

Technical development: Key milestones for first half of 2022



**Supplement review
launch (internal)**

*Share 'Technical
Supplements to Steps
1 & 2' with SBTN
partners & corporate
engagement program
for their review*



**Methods for freshwater
SBTs internal review**

*Share draft method
to SBTN partners &
corporate
engagement
program for review*



**Public consultation on
methods for
freshwater
and technical
supplements**

*Release method for
freshwater SBTs &
Supplements publicly,
via our website &
webinars*

Technical development: How you can help

If you are a technical expert or member of the CEP:

- Please ensure you provide input to our team on the Technical Supplements and supporting materials by February 24th

If you are a representative of your organization (SBTN partner or Global Commons Alliance member):

- Please ensure your colleagues are aware of the key updates to the guidance, and that any additional experts are referred to our team for inclusion in the review

Please note: this a closed review process open to experts from our partners and CEP members. Draft documents are NOT intended for wide circulation.

Freshwater Hub update

SBTN Freshwater Hub partners:



WORLD
RESOURCES
INSTITUTE

SBTN Freshwater Hub funder:



Freshwater Hub update

1. Ground taken to date

- Three Pilots - Steps 1 and 2 completed and work underway on Step 3
- Companies piloting independently - SBT Freshwater Hub's advisory role
- Step 1 and 2 Freshwater methods incorporated into SBTN guidance



SUNTORY

Freshwater Hub update

2. Current priorities

- Complete Step 3 piloting and update Step 3 Freshwater methods [to be sent for review in March 2022]
- Update Step 3 Freshwater methods based on feedback [to be published in May 2022]
- Support development of SBTN tools and communication materials

3. How you can be involved

- Feedback to Steps 1 and 2 Freshwater methods [now]
- Feedback to Step 3 Freshwater methods [to be sent for review in March 2022]

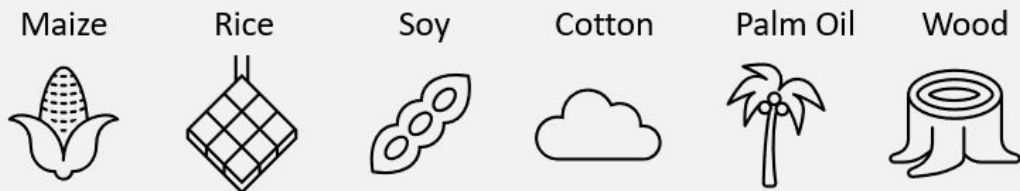
Please reach out to Erin Billman erin@sbtnetwork.org & Erin O'Grady erin.o@sbtnetwork.org if you have funding opportunities (from June 2022) to continue our work on Steps 4 and 5.

Land Hub update

1. Commodity Impact Estimation
2. Advancing SBTN Land
3. Place-based Approaches
4. Advancement in Climate Targets

Commodity impact estimation

This work is exploring how to estimate and communicate several land-based impacts of the production and sourcing of six commodities.



The SBTN Land Hub contracted Quantis Intl. in the summer of 2021 to help develop these impact estimates using additions to their geoFootprint methodology and spatial tool.

The intent is to use these methods to test the effectiveness of the SBTN Land Hub draft indicators for land transformation and land occupation and **to provide companies with a way to estimate their land impacts whether they have specific sourcing locations or not**. Scheduled to conclude at the end of May 2022, the workplan includes:

1. Method and tool development
2. Corporate pilots
3. Method and tool refinement
4. Launch of tools

Advancing Science-based Targets for Land

What are we doing?

Developing methodologies, guidance and tools for companies to set science-based targets for nature linked to land occupation and land transformation.

Why is this work critical?

- There is corporate demand for it with >80 companies with \$4 tn market cap involved in the SBTN Corporate Engagement programme already.
- There is a need to “course correct” companies towards system-level, holistic solutions with climate and nature outcomes.
- There is a risk that costs and benefits of tech-based climate solutions versus NBS are not fully considered.
- Net zero climate commitments are putting pressure on the land sector for deliver carbon credits for purchase by non-agriculture/ forest sector.

5 streams of work:

- **Objective 1:** Align land indicators across Hubs & NCPs
- **Objective 2:** Create regionalized ‘draft’ thresholds
- **Objective 3:** Develop Land target-setting methodology
- **Objective 4:** Provide technical guidance and resources for companies
- **Objective 5:** Launch SBT Land Hub methodology and promote uptake

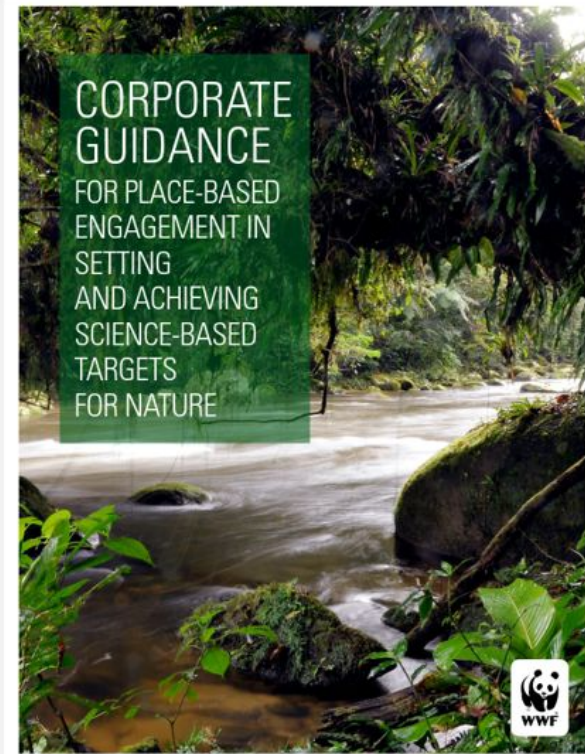
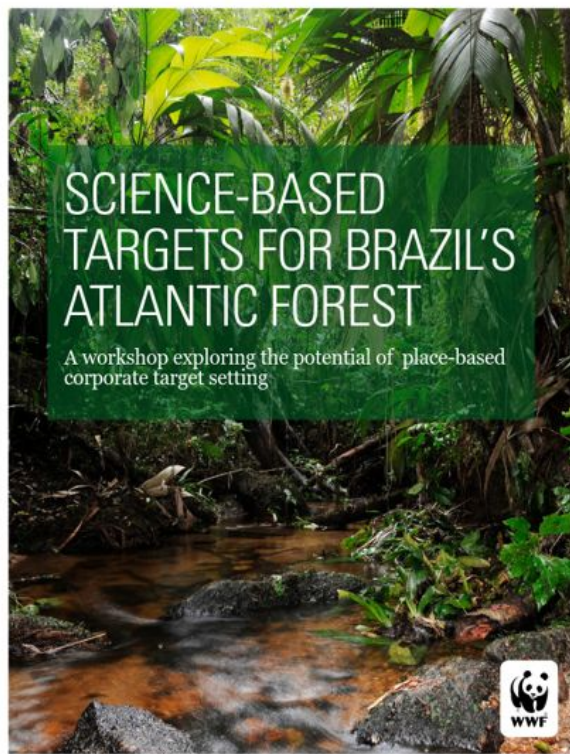
Our partners & donors:



Science-based Targets for Brazil's Atlantic Forest

&

Corporate guidance for place-based engagement



Two
complementary
projects on land-
based emissions



GHG PROTOCOL Land Sector and Removals Guidance

Scope: Develop updated and improved Greenhouse Gas (GHG) Protocol guidance for companies in the land sector and to include removals

WRI, WBCSD



SCIENCE-BASED TARGETS INITIATIVE (SBTi) Forests, Land, and Agriculture (FLAG)

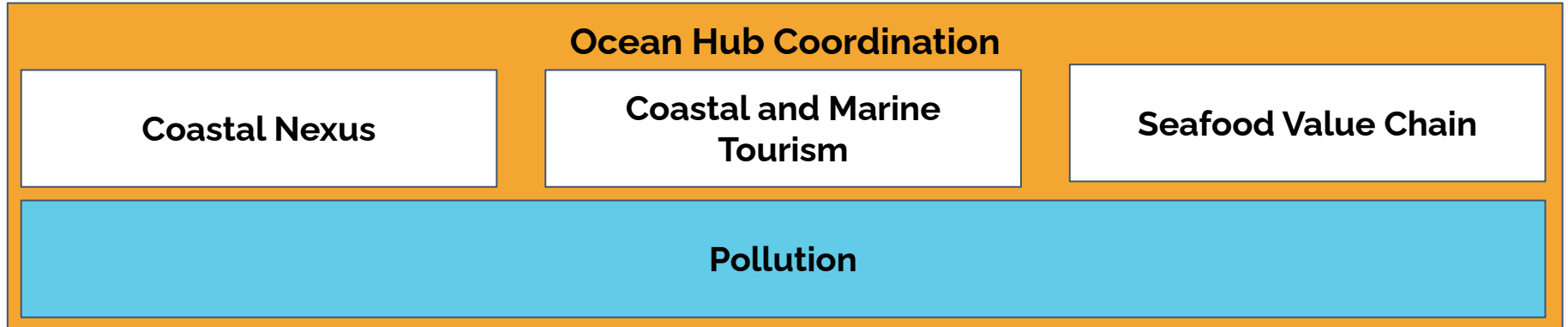
Scope: Develop methods and guidance to enable companies to set science-based targets (SBTs) that include forests, land, and agriculture (FLAG) emissions and removals

WWF

Ocean Hub update

Seed funding enabled:

1. Interim coordinator in place
2. Launch strategy co-creation among key stakeholders



Existing fisheries work could provide starting point for rapid progress on ocean SBTs

Selected Frameworks	Type	Commercial Fisheries	Aquaculture	Fisheries Finance
Sustainable Development Goal 14	Intergov. targets fw			
Aichi Biodiversity Targets	Intergov. targets fw			
FAO Code of Conduct for Responsible Fisheries	Guidance framework			
Aquaculture Stewardship Council	Guidance framework			
Principles for Investment in Sust. Wild Caught Fisheries	Guidance framework			
MSC Certification	Disclosure platform			
Sustainable Fisheries Partnership: Target 75	Disclosure platform			
Ocean Health Index	Disclosure platform			
Ocean Disclosure Project	Disclosure platform			
SeaBOS	Best practice			
Policy Benchmarking Tool: Regional Seafood method.	Best practice			

Selected Initiatives

SALT
SEAFOOD ALLIANCE FOR LEGALITY & TRACEABILITY

CONSERVATION ALLIANCE FOR SEAFOOD SOLUTIONS

Monterey Bay Aquarium Seafood Watch

HIGH LEVEL PANEL for A SUSTAINABLE OCEAN ECONOMY

FRIENDS of OCEAN ACTION

Sustainable Seafood Coalition

WorldFish

GSSI
GLOBAL SUSTAINABLE SEAFOOD INITIATIVE

RISE UP
a blue economy action

Fair Trade CERTIFIED™

Global Seafood ALLIANCE

Ocean hub current priorities

Two key priorities:

1. Resource mobilization
2. Launch workstream(s) funding dependent

Please reach out to Erin Billman erin@sbtnetwork.org & Erin O'Grady erin.o@sbtnetwork.org if you have funding opportunities.

Biodiversity Hub update

Key questions to address in the next period:

- How CBD Post 2020 Framework, work of the Earth Commission and other international conventions interact with our work
- How biodiversity components integrate with the other methods under development.

Species

Development of Species Threat Abatement and Restoration Metric

- STAR (Species Threat Abatement and Restoration) metric, building from IUCN Red List of Threatened Species available through IBAT.

Ecosystems

Development of an Ecosystem Integrity Index

- Final methodology of EII under development, to be published in late 2022.
- Integration within SBTN wider process (across steps and realms) in focus for 2022.

NCPs

Working on Nature's Contribution to People

- NCP models piloted for specific services, for both assessment and forecasting.
- Analytical methods for cotton and leather in process, viscose under development.
- Exploring improved linkages w/ on-farm practices, as well as estimation methods correlated with EII.

Biodiversity Hub update

Current Biodiversity Hub priorities

- Develop method components for target setting, focus on species and ecosystems; to be integrated within other SBTN target setting methods
- Align and set priorities and areas of focus in 2022 and beyond, to seek relevant funding

How you can be involved ?

- Share lessons learned in your efforts to set and report on biodiversity commitments (including using different metrics from ones detailed here).

Corporate Engagement

Progress To Date

Companies working on
SBTs for nature

90+

Companies

30

Countries

\$4 trillion

Market cap

55+ Partners



Referral Program

40+

Specialist
consultants

12

Languages

125+ Corporate Engagement
Program (CEP) members

from 11 sectors

Corporate Engagement

Current Priorities

- Incorporating end-user feedback and designing products that work well for end-user (shared priority with Technical Team)
- Ensuring that companies getting ready to set SBTs for nature have up-to-date technical development information
- Empowering SBTN partner network to build awareness in private sector and help get companies ready to set SBTs for nature
- Recruiting to CEP/Referral Program from developing and emerging markets

Corporate Engagement

How To Get Involved

Offers:

1. Join office hours, first Monday of every month, 9-10 am Eastern time (starting February 7)
2. Continue to pilot products/give feedback as opportunities arise

Requests:

1. Recruit companies to Corporate Engagement Program
2. Recruit service providers to Referral Program

Finance Sector Working Group

- CDP
- CERES
- Church of England Commissioners
- FAIRR
- Finance for Biodiversity Foundation
- F4B Initiative
- Planet Tracker
- Porticus
- ShareAction
- UNEP-FI
- UN PRI
- World Benchmarking Alliance
- WWF

Finance Sector

Current Priorities

- **Goal:** Engage with financial institutions as levers for adoption of SBTs for nature
- **Key targets:**
 - Identify and influence key initiatives like TNFD, ISSB, etc. to include nature and align with SBTN's work (metrics, definitions)
 - Identify and be present at key industry events to talk about SBTN
- **Offers:** Alignment with TNFD, reflected in our role as core knowledge partner



“

The Science Based Targets Network is pleased to be a core knowledge partner of the TNFD. As we finalize the methods for companies to understand and limit their nature-related risks and set science-based targets for nature, we are collaborating to align our guidance for companies with TNFD’s forthcoming disclosure framework.

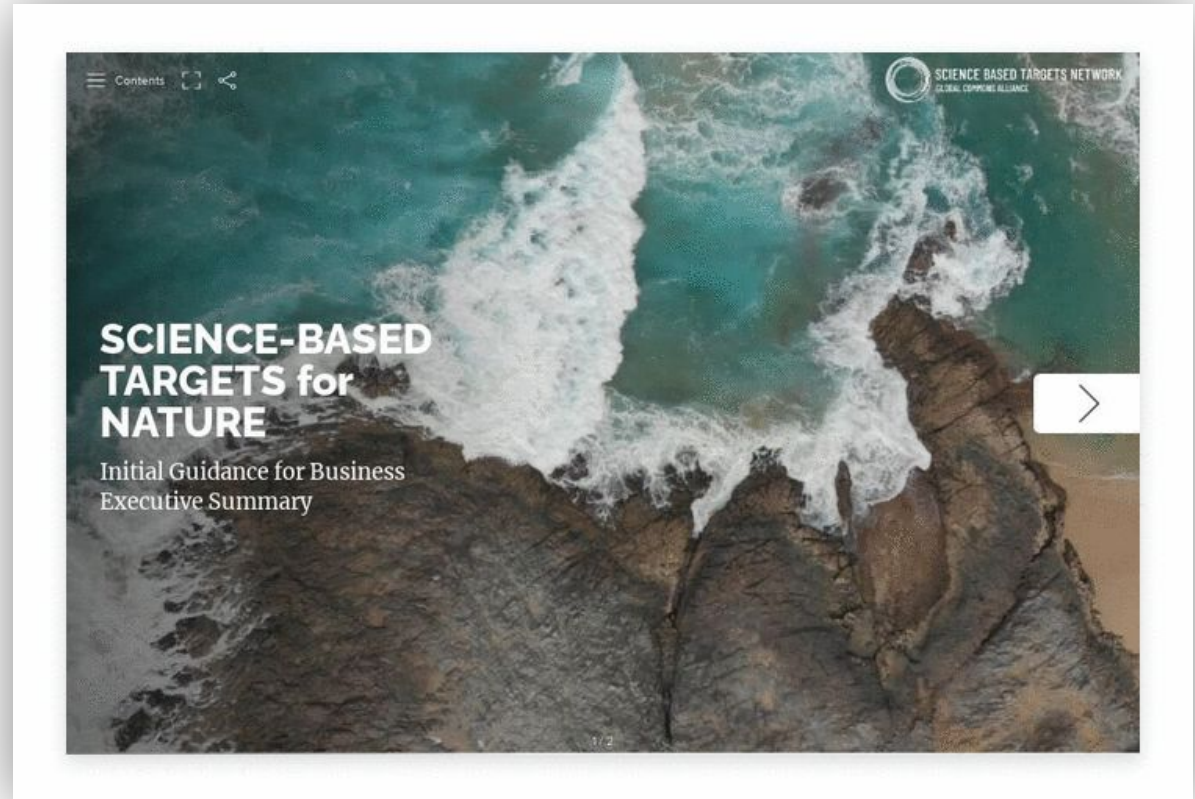
Erin Billman

Executive Director, Science Based Targets Network

Accessible content + user experience

SBTN guidance highlights:

<https://sciencebasedtargetsnetwork.org/guidance-highlights/>



Reinforcing no regrets actions

SBTN No regrets actions messaging

1.

**UNDERSTAND YOUR
IMPACTS &
DEPENDENCIES ON
NATURE**

FOLLOW OUR GUIDANCE

2.

**SET INTERIM
TARGETS**

VIEW OUR
RECOMMENDATIONS

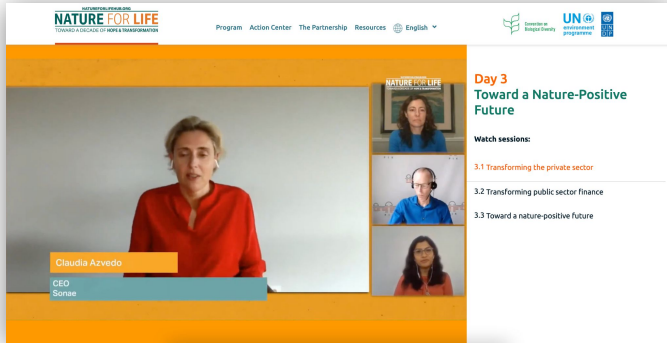
3.

**LEAD
THE WAY**

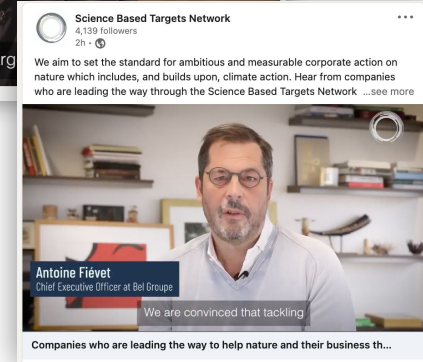
JOIN OUR CORPORATE
ENGAGEMENT PROGRAM

Please share our calls-to-action and content
with your communications team for integration
when relevant

In the voice of companies



UNDP Nature for Life Hub



SBTN YouTube Channel:

https://www.youtube.com/channel/UC2e_Ki3f5K67lO_OoN733r4A



COP26 Nature Newsroom

Opportunity for companies and partners to participate in case studies and video testimonials - contact arabella@sbtnetwork.org

Looking Ahead

Three key priorities for the network

Technical direction

Put in place next chapter of technical leadership

Refresh 1- and 3- year plan for technical development

Establish initial target setting infrastructure

Sufficient resources

Accelerate and deepen fundraising efforts

Ensure sustainable operating model

Focused delivery

Deliver 'minimum viable product' within this year

Maintain transparency and collaboration; and manage expectations

Position opening: SBTN Technical Director

Looking for full time candidates

Secondees from partners or strong external candidates

Contact Erin Billman (erin@sbtnetwork.org)

Partner key developments

World Benchmarking Alliance: public consultation on the draft methodology for the Nature and Biodiversity Benchmark – running until 2 March

Business for Nature: CBD negotiations, input to Target 15 indicators

SBTi: public consultation on Forest, Land and Agriculture targets – running until 18 February

WBCSD: Nature positive building blocks

Thank you!

**Mark your calendar for April 21, 2022 at 10am
ET for the next SBTN partner session**

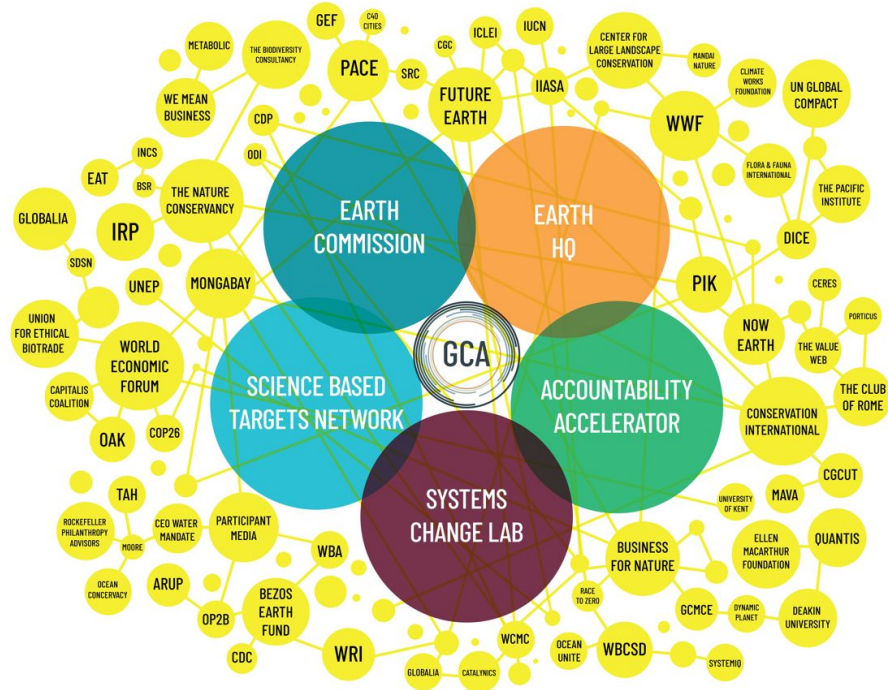
**Q&A from the session
can be found here.**

Global Commons Alliance (GCA), driving convergence in a fragmented ecosystem

Alignment in narrative & action from 70+ world-leading partners

Our Mission:

Empower citizens, cities,
companies and
countries to become
stewards of the global
commons



We have three priorities for the next three years at the GCA



MINDSET SHIFT | Mainstream a scientific understanding of humanity's critical dependence on the Global Commons, the existential threat posed by its tipping points, and develop safe and just guardrails for people and planet



MECHANISMS FOR ACTION | Scale the adoption and implementation of science-based targets for the Global Commons amongst companies and cities, including through engagement with governments



SYSTEMIC APPROACHES | Facilitate convergence of key actors around an equitable and systemic approach to stewarding the Global Commons through research, data, tools and facilitation at local and global levels